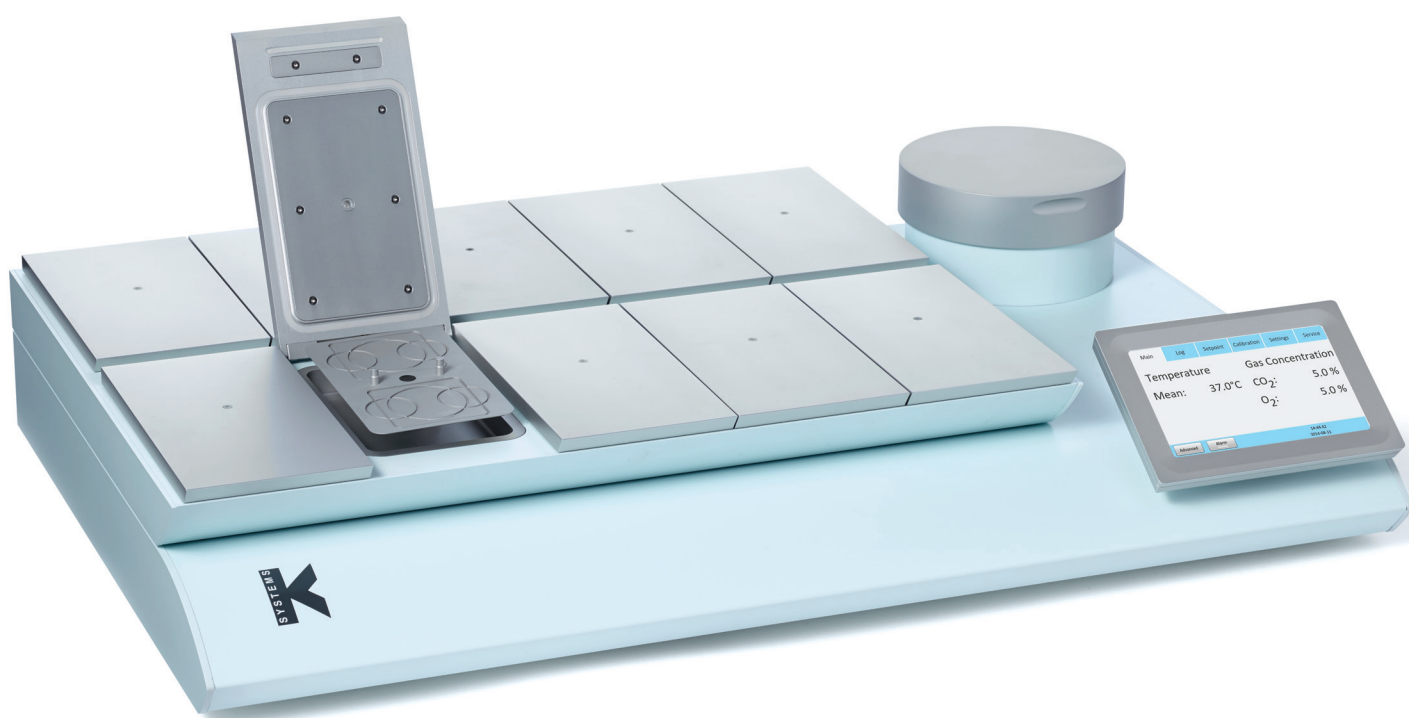




EQUIPMENT BY K-SYSTEMS®

G210 InviCell

Ambient-Air technology for stress-free embryo culture



a CooperSurgical Fertility Company

Features included as standard:

- State-of-the-art gas and temperature control
– HEPA and VOC filtered gas supply
- Built-in gas mixer – recirculated gas means low running costs
- All-natural 6-sided heating system using Alu Heat technology
- Emulator for basal body temperature (BBT)
- EM Neutra technology eliminating electric field around embryos
- Extensive data logging and monitoring capabilities
- Innovative Danish design with advanced touch-based user interface
- Low noise levels

Data	G210 InviCell	G210 InviCell Plus
Width (mm)	860	860
Depth (mm)	550	550
Height (mm, standard stand)	170	170
Weight (kg)	45	45
Power (kW)	0.27	0.27
Gas consumption (l/h):		
CO ₂	0.7	0.7
N ₂	7	7
Recovery time (min):		
CO ₂	< 2	< 2
O ₂	< 4	< 4
Individual chambers	10	10
Equilibrium chamber	1	1
Temperature controlled	Standard	Standard
Gas controlled	Standard	Standard
Alu Heat technology	Standard	Standard
No. of heating zones	11	11
No. of temperature sensors	22	22
Dish inserts (min 10 per unit):		
NUNC	Optional	Optional
Falcon	Optional	Optional
Vitrolife	Optional	Optional
Continuous pH measurements		Optional
External CO ₂ measurements		Optional
External temperature measurements		Optional
SMS-enabled alerts	Standard	Standard
120–240V	X	X
Packing included	Standard	Standard

The G210 is a CE marked device and is in conformity with the essential requirements of the Medical Devices Directive 93/42/EEC as amended by Directive 2007/47/EC.

Learn more about our equipment at www.origio.com

Legal Manufacturer: CooperSurgical Inc, 95 Corporate Drive, Trumbull, CT 06611, USA

Options:

- Continuous pH measurements
- Independent external monitoring of temperature and CO₂
- Stacking system for up to 30 patients on same footprint



Stacking System	
Width (mm)	1100
Depth (mm)	830
Height (mm, standard stand)	1620
Weight (kg)	100

- Space for 3 incubators
- Space for PC
- Built-in power outlets
- Sliding shelves with soft-close feature
- Integrated ventilation system
- Drag chain to manage tubing and cables

ORIGIO a/s
 Knardrupvej 2
 2760 Måløv
 Denmark
 Tel: +45 46 79 02 00
www.origio.com



CooperSurgical Fertility Companies