



Equipment

Our cutting edge range for ART

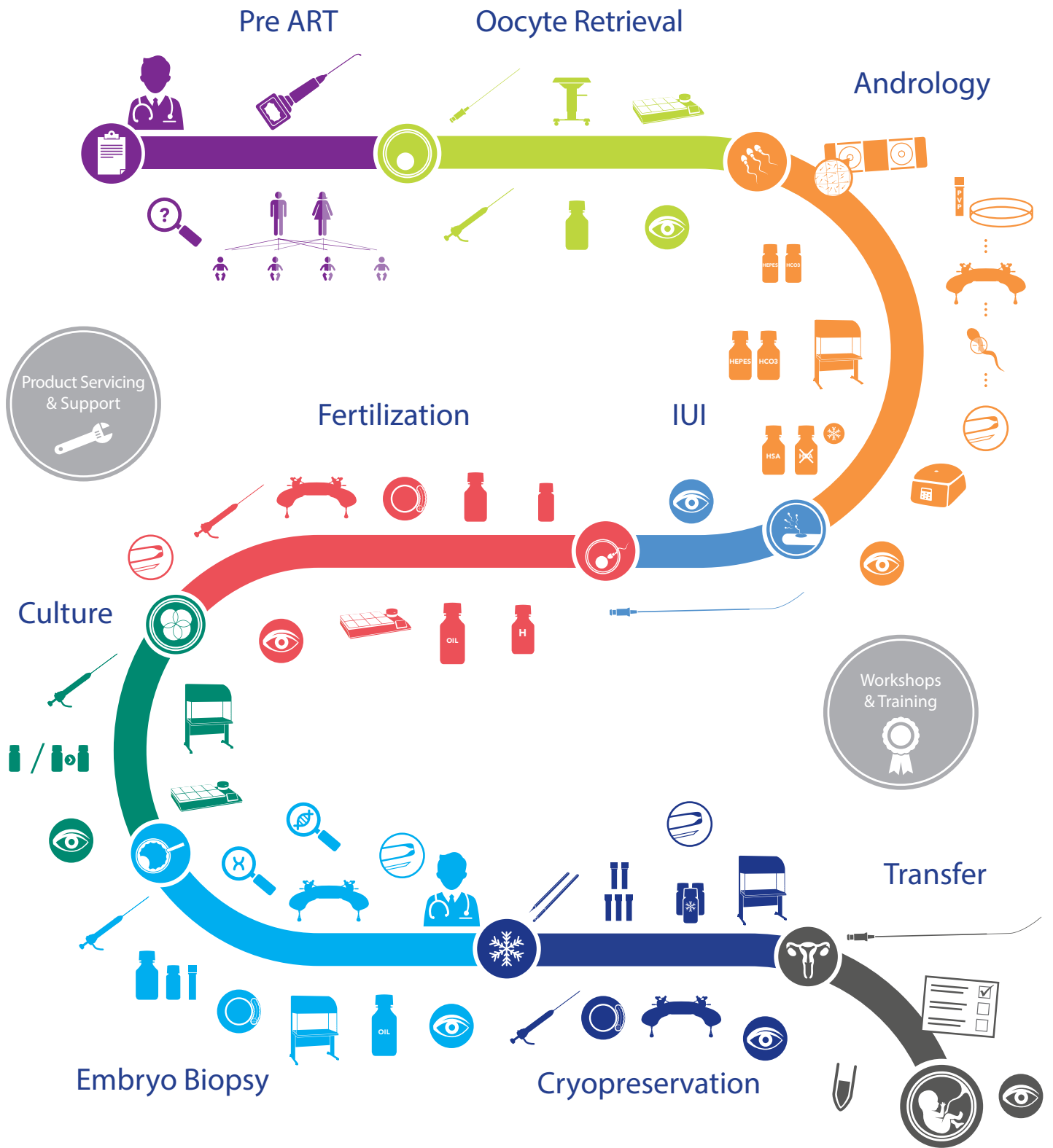
Incubators, Workstations, Micromanipulators and Lasers



QUALITY CONTROL | OOCYTE RETRIEVAL | ANDROLOGY & IUI | FERTILIZATION | CULTURE | PGD & PGS | CRYOPRESERVATION | EMBRYO TRANSFER



CooperSurgical Fertility Companies



IVF market leaders ORIGIO, Research Instruments and K-Systems have joined forces, as CooperSurgical companies.

We are now working in partnership, sharing our extensive experience, pooling our scientific knowledge and collaborating with ART experts, to provide a system of innovative products for the complete IVF process.

We can empower your clinic to succeed using our unique combination of tried and tested equipment, scientific insights, understanding of clinical processes and informative training and education programs.

Availability of all devices for clinical use are dependent upon the regulatory approval status within the country in which they are intended to be sold.

Incubators

Our range of incubators provide a stable culture environment, essential for the optimization of embryo development, without compromising your need for space.

Workstations

Our workstations are of the highest quality, providing a comfortable and high-functioning work area. Every effort is made to ensure that every model ordered meets the needs of your laboratory - large or small. Some workstations can accommodate an RI Witness™ flush-fitted heated plate, providing consistent temperature control as well as security and tracking for embryos and gametes.

Class I Workstations

Designed for optimal working conditions in the laboratory, providing a safe environment. Available in a range of size options (2ft, 3ft, 4ft, 5ft, 6ft) and multiple configurations.

Micromanipulator

Integra 3™, our ultra responsive and effortlessly smooth micromanipulation system.

Laser

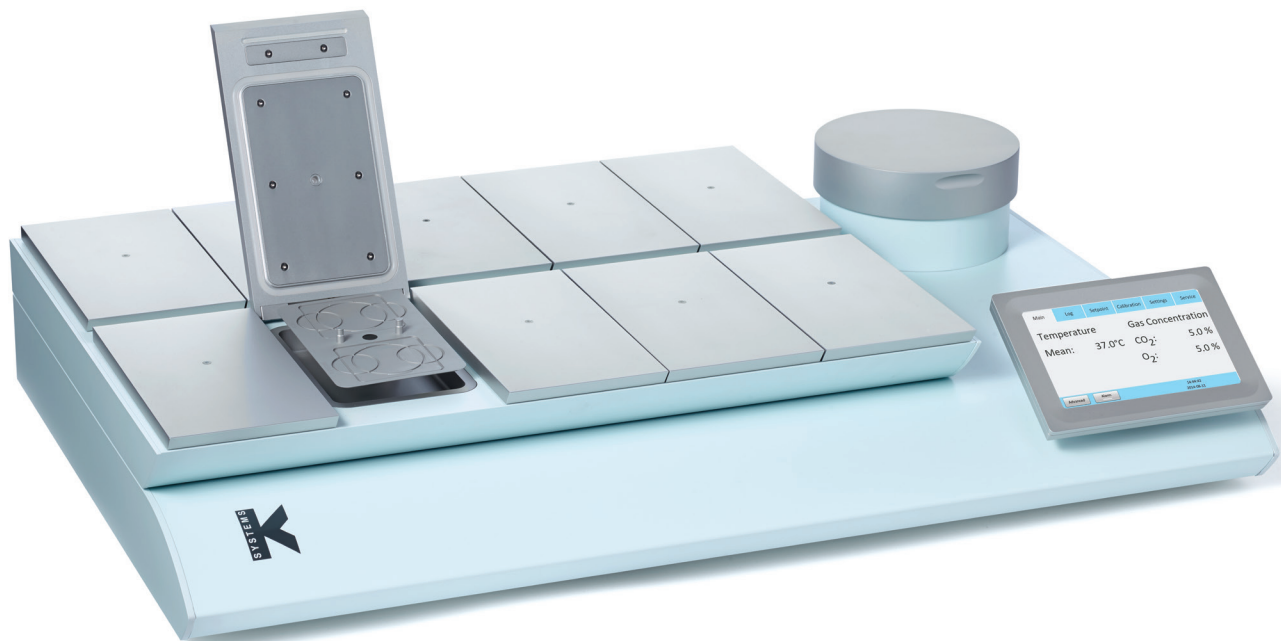
The first directional laser on the market, the Saturn™ Laser System is a must for biopsies, assisted hatching and zona thinning.

G210 InviCell

Long Term Incubator

Encapsulating 20 years of incubator development experience, the G210 InviCell incubator combines optimal embryo growth conditions with advanced user control. It is the ideal incubation solution for a busy clinic.

- **Space Saving** - Ten individual incubation chambers to help ensure minimal stress and risk of cross contamination. Significant space saving
- **Heating** - Bespoke heating plates ensure direct heat transfer to the dish
- **Responsive Gas Control** - Sets the required specifications to mix CO₂ and O₂. Uses pure CO₂ and N₂ (optional)
- **Optimal Environment** - Embryo conditions, including pH levels, are kept stable through advanced and accurate software control of gas and temperature
- **Ambient Humidity** - Minimizes the risk of fungal growth inside the incubator and makes it easier to clean
- **Considered Design** - Electro-magnetic fields eliminated by non-inductive EM Neutra™ patented technology
- **Superior Filtering and Hygiene** - High efficiency particle filter to remove airborne particles. VOC filter to remove organic compounds
- **Tracking and Alarm** - Data logging and alerts with K-Link™ extensive ethernet based monitoring
- **Advanced User Control** - Intuitive user interface with dedicated security system
- **Economical** - Low running costs due to low gas consumption and use of pure gas
- **Independent External Monitoring** - An option for monitoring of key parameters including temperature and gas concentration

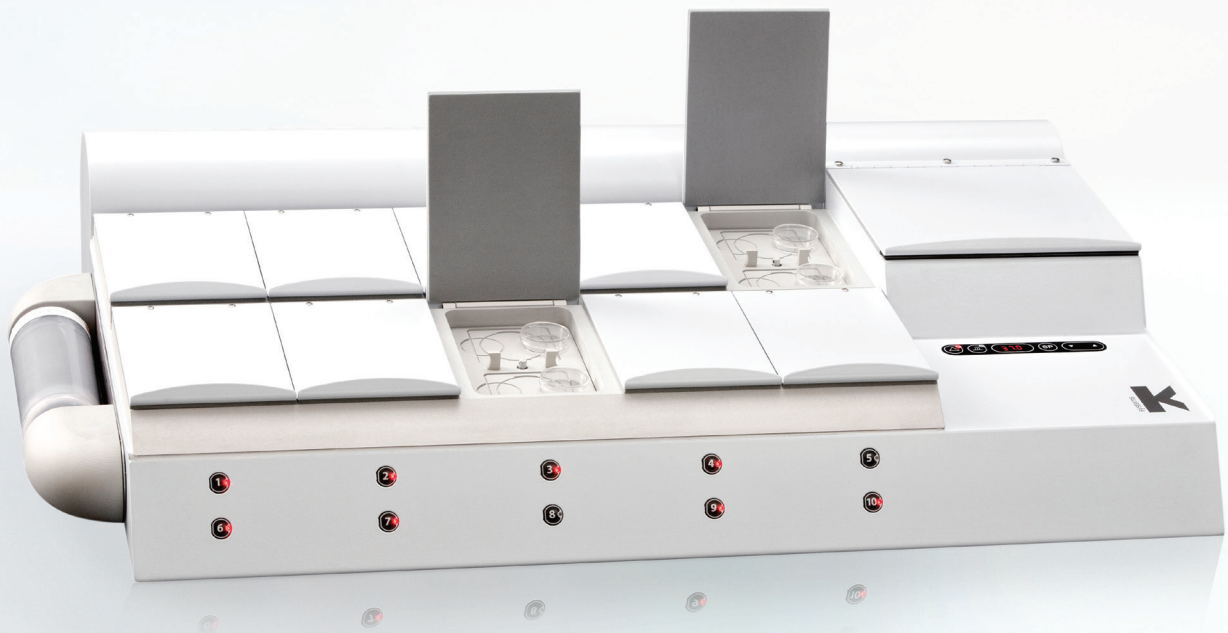


G185

Long Term Flat Bed Incubator

The ideal work horse for a busy clinic, the G185 reduces stress factors for embryos through firm control of the environment.

- **Ambient Humidity** - Minimizes the risk of fungal growth inside the incubator, easier to clean
- **Practical** - Includes ten individual incubation chambers to ensure minimal stress and risk of cross contamination. Significant space saving
- **Monitoring** - Effective heating and gas control system assuring all critical parameters are monitored and controlled to maintain stable pH, heating, and gas levels
- **Consistent Heating** - Dedicated heating plates with grooves ensure direct heat transfer
- **Responsive Gas Control** - Set the required specifications to mix CO₂ and O₂. Uses pure CO₂ and N₂ (Optional)
- **Superior Filtering and Hygiene** - High efficiency particle filter to remove airborne particles. VOC filter to remove organic compounds
- **Economical** - Low running costs due to low gas consumption and use of pure gas





Incubator Stacking System

Space saving ingenuity for the G185 and G210



- The Stacking System can house three incubators - up to 30 patient samples
- It provides central monitoring and has sliding shelves, with a soft-close function, built in power outlets, a fan for heat removal and a tray system for organizing tubes and cables.

ORIGIO[®]/PLANER BT37

Benchtop Incubator

Designed to maintain consistent culturing environments for optimum temperature and pH control.

- **Emergency Power** - Integrated battery backup
- **Fast Recovery** - Rapid recovery to optimal temperature, gas and humidity
- **Compatible** - Base plate of chamber designed to fit commonly used IVF dishes
- **Monitoring** - Six ports for temperature monitoring
- **Optimal Conditions** - Works with premixed gas of choice to achieve desired CO₂ and reduce environment O₂



Fortuna-IVF Workstation

Specially designed to meet the needs of a busy IVF laboratory where Class I protection is required

- **Consistent, Gentle Air Flow** - Even curtain of non-turbulent air flow at less than 48dBA, with HEPA filters
- **Safe** - Independently certified. Complies with the necessary safety requirements for electrical equipment:

IEC 61010- 2-010:2003
IEC 61010 -1 -2010 (3rd Edition)

Width Options

3ft	4ft
5ft	6ft



- **Even Temperature Control** - Integrated temperature controlled humidification system enabling full flexibility for short-term incubation
- **Optimized Work Area** - Electrically heated, microscope prepared surface, with accurate control and even temperature stability. A heated glass stage, and an LED light source are included as well as a 21.5" LCD monitor and electrical outlets, as standard

Titan-IVF Workstation

Compact single workstation for laboratories with workspace constraints

- **Space Efficient** - Only 2ft wide
- **Quiet Consistent Air Flow** - Even curtain of non-turbulent air flow at less than 52dBA, with HEPA filters
- **Even Temperature Stability** - Electrically heated surface with accurate control
- **Optimized Work Area** - Heated surface is microscope prepared, includes a heated glass stage and LED light source as standard
- **Adjustable Height** - Available with fixed support stand or electrically adjustable
- **Safe** - Independently certified. Complies with the necessary safety requirements for electrical equipment:

IEC 61010- 2-010:2003

IEC 61010 -1 -2010 (3rd Edition)



Integra 3

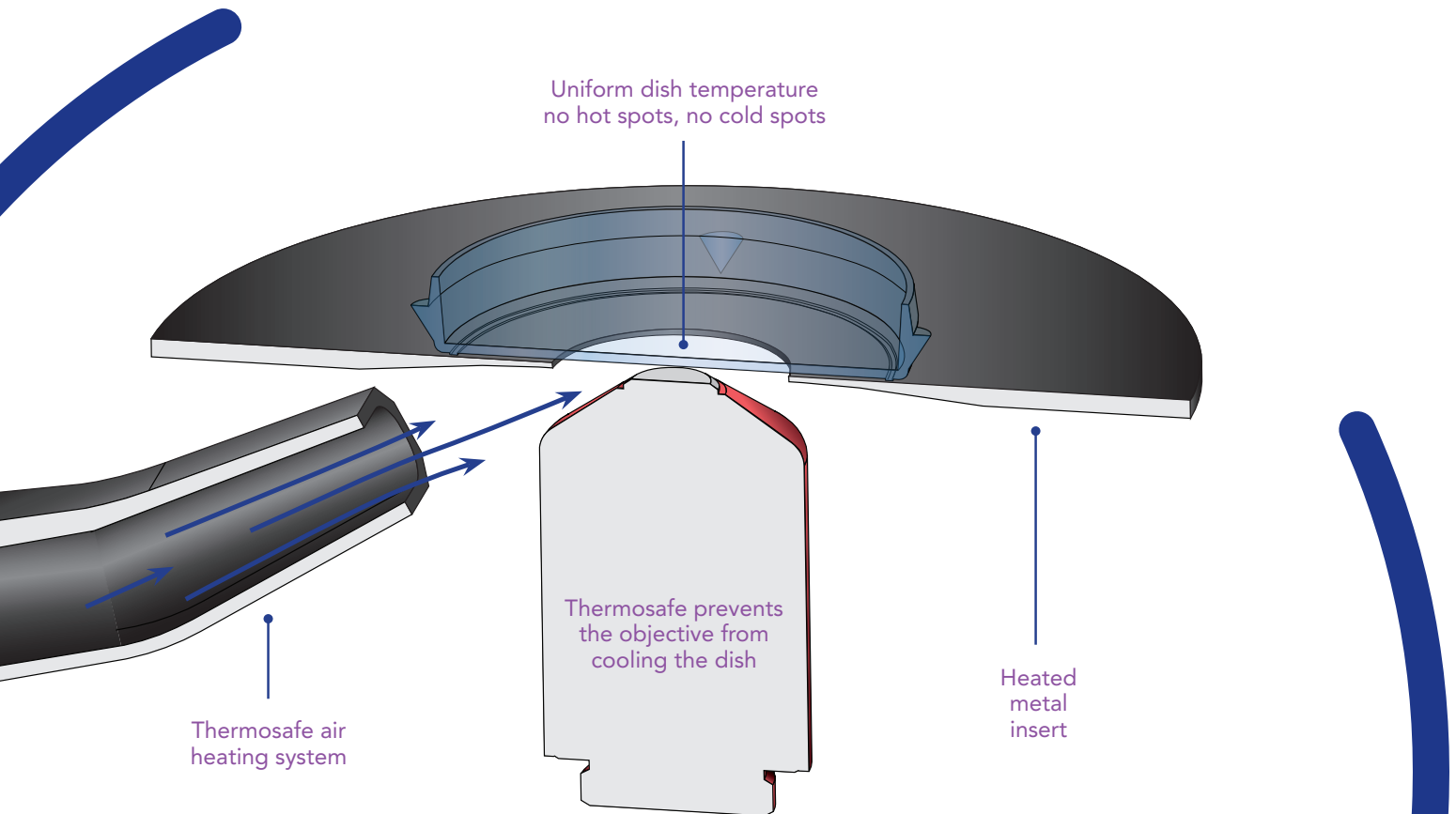
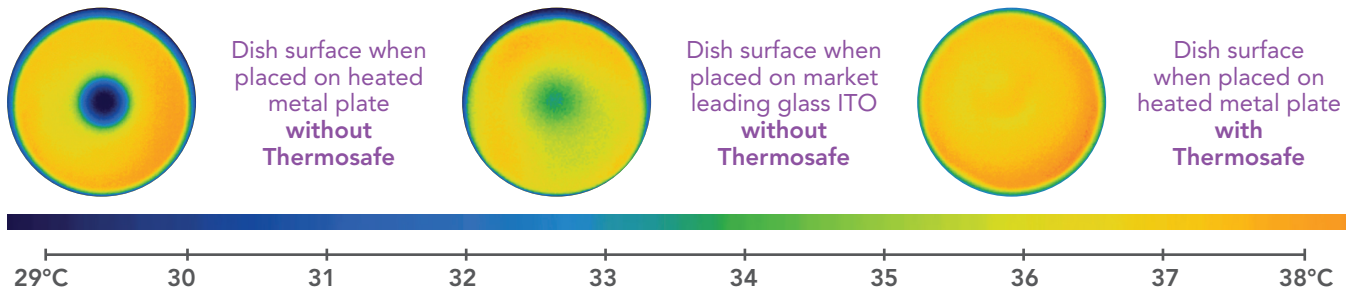
Our ultra-responsive and effortlessly smooth micromanipulation system.

Every detail of the Integra 3 is geared towards one goal – to ensure you create the best possible conditions for ICSI and sample manipulation.

Featuring Thermosafe™

Thermosafe is an integral heating system that helps keep samples at the optimum temperature. It provides advanced temperature control compared with a glass ITO and metal plate without Thermosafe. By passing a gentle stream of air under the Petri dish, it maintains sample temperature.

The result is no more cold spots, no more hot spots or ambiguity.





The Integra 3 offers the smoothest possible movement of the XY stage, precise movement of the micropipette through the fine and coarse control levers, and a choice of oil or air syringes for the control of specimens. Further design features optimize its ease of use.

- **Super-Fast** - Improved rapid micropipette set-up with one-step angle adjustment
- **Easy-To-Use** - Simple touch screen controls for adjusting stage temperature
- **Motion-Triggered Light** - Illuminates as soon as it detects your hand under the stage for changing objectives
- **Shortcuts** - Hit the shortcut buttons to film or photograph any stage of the process. There is also a counter button and an on-screen stopwatch
- **Safe** - A stage temperature control status indicator light and alarm monitors every second of the process. A log is kept of every alarm triggered
- **Color Touch Screen** - The 3.5 inch screen display shows temperature, stopwatch and a counter. Electronic height indicators track the vertical position of tool holders
- **Integrated** - Large built-in mechanical XY stage plus temperature controllers with easy access buttons and touch screen



Saturn 5™

Fixed and Directional Laser System

The first directional laser on the market, the Saturn Laser System is a must for biopsies, assisted hatching and zona thinning.

Saturn 5 Active Directional Laser with Curved Biopsy Mode

Using Biopsy Mode, you can draw a straight or curved line along the sample, select the number and size of holes, and then simply “fire”. The laser will ablate exactly along the chosen path, meaning you no longer need to move the holding pipette. It is that easy.

Safest Power

Lowest laser pulse times for minimal energy near critical cells. Exclusion Zone feature helps ensure cell safety.

Energy Delivered vs Hole Diameter Using Saturn Laser (400mW)

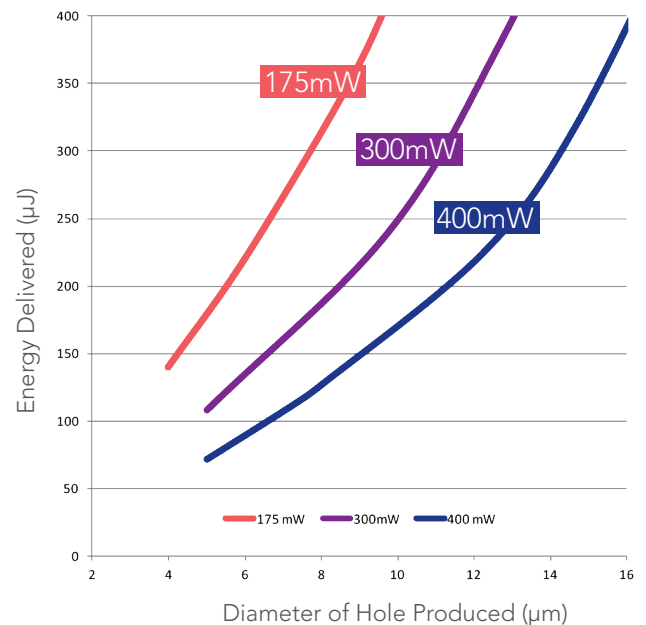


Figure 1. RI White Paper. A comparison of different power levels used by laser systems in the IVF laboratory – available upon request.

Figure 1.

RI Viewer™ Intuitive Software as Standard

RI Viewer offers uncluttered full screen imaging from the microscope, digital magnification, and a modern, clean user interface. It also offers a recording function, line measurement tools which are visible on-screen and are printable, plus a built-in laser simulator for training and demonstration purposes. RI Viewer supports a range of languages.

- **Precise** - Excellent accuracy and unique computer-controlled laser with guaranteed laser alignment
- **Rapid** - Fast directional laser increases functionality and decreases procedure times
- **Always Spot-On** - Consistent positioning as the pilot laser travels down the same fibre optic path as the ablation laser
- **Foot Pedal** - A USB single or triple foot pedal can be programmed to control main features such as Fire, Zoom, Take photo

2. 20x objective not cleared for sale in the US



Supporting Products

As part of our full product portfolio we also supply:

K-Systems



Anti Vibration Table



Incubator Glass Hoods



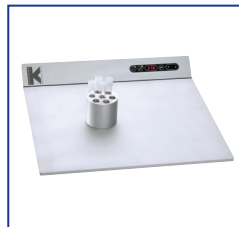
CO₂/O₂ Humidifier



Portable Incubator G95



Block Warmer - G73
and Warming Blocks



Warming Plate
T45 & T47



Trolley with Warming
Table Top



CO₂ Mini Incubator G85

ORIGIO



Gas Line Filter



Gas Analyzer



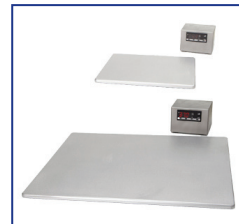
Scanfuge Centrifuges



Anti Vibration Table



Warming Blocks and
Glass Incubator Hoods



Warming Plates



Heated Trolley

Other Products



Narishige
Micromanipulators



MVE Dewar Tanks



TMC AV Tables

To find out about these and other products please visit origio.com



Training Programs

Our scientific training courses allow you to optimize your performance, learn new skills and network globally with international peers

ORIGIO has been providing hands-on training and education since March 2011. Situated at its corporate headquarters in Måløv, near Copenhagen, Denmark, the dedicated training laboratory is fully equipped for demonstrations, and hands-on training in a comprehensive range of Assisted Reproductive Technologies.

Rather than promoting products, ORIGIO focuses on providing evidence-based training by skilled, experienced embryologists including invited experts in specific topics such as vitrification, sperm selection, and embryo biopsy.

Courses are always in high demand with embryologists from across the globe requesting training both in general embryology and in specific ART procedures. Feedback from participating embryologists is extremely positive with courses regarded as 'highly professional', 'inspirational', and having a 'fantastic hands-on lab'. Participants also appreciate the opportunity to network with peers from other countries.

A range of workshops has been developed aimed at more senior embryologists, tackling topics such as Culture Media, Laboratory Design & Start Up, and Quality Control.

For further details visit www.origio.com

Service plans

Helping you focus on your core business

Our service plans offer a range of contract options to suit varying laboratory needs. Our Bronze, Silver and Gold packages let you choose the level of coverage you require for product maintenance, repairs and technical support.

Our Front Line Support team can be contacted online for technical inquires and to arrange site visits for installations and maintenance. We also operate a dedicated emergency call line for urgent repairs.

For more information, contact our service team at service@origio.us.com

